



Confidea®

Wired and Wireless
Conference system



televic
conference

A photograph of a group of people, including men and women, seated at a long table in a meeting room. They are wearing professional attire, such as suits and blouses. In front of them are several microphones and clear glass water bottles. The scene is brightly lit, and the overall atmosphere is professional and focused.

Televic Confidea®
the ideal solution for:

- Rental companies
- Community councils
- Board rooms
- Hotels
- Large organisations
- Universities

Confidea®

Wired & Wireless Conferencing

The first Multi-Band
wireless conference system
on the market

Discussion

Reliable transmission
full functionality
and ease of use

Voting

Wired and Wireless
hybrid installs
integrated seamlessly

Simultaneous
Interpretation



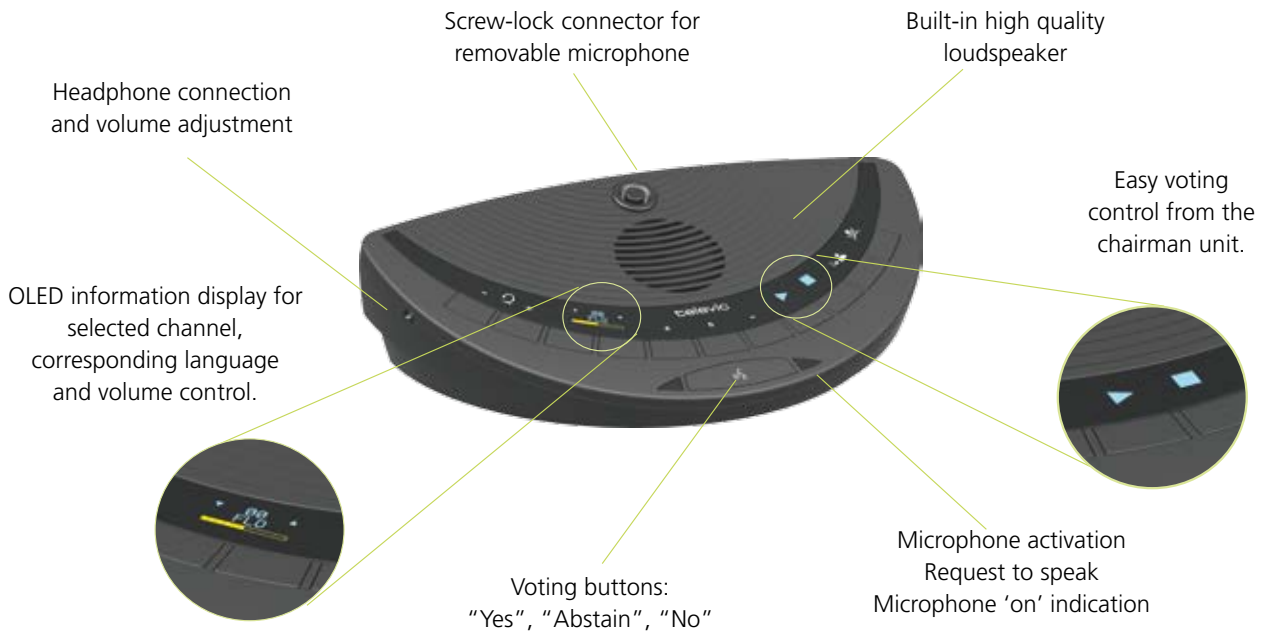
televic
conference



Televic Confidea® Wired and Wireless

- Choice of wired or wireless
- Easily combined in one install
- A model for each application
- Ease of use
- Quick set-up and dismantling

Confidea® Wired and Wireless



Discussion

Confidea (L-) DD/CD



- Microphone activation button
- Two headphones connections with single volume control
- Chairman version (Confidea CD) equipped with priority and next-in-line button

Interpretation

Confidea (L-) DI/CI



- Microphone activation button
- Two headphones connections with single volume control and channel selector.
- One OLED information display
- Chairman version (Confidea CI) equipped with priority and next-in-line button

Voting

Confidea (L-) DV/CV



- Microphone activation button
- Two headphones connections with single volume control
- Three voting buttons
- OLED information display
- Chairman version (Confidea CV) equipped with priority and next-in-line button, and 2 OLEDs
- Chairman can start and stop voting from the unit

Full Function

Confidea (L-) DIV/CIV



- Microphone activation button
- Two headphones connections with single volume control and channel selector
- Five voting buttons
- OLED information display
- Chairman version (Confidea CIV) equipped with priority and next-in-line button



The Confidea® Wireless System offers:

- Multi-band capability
- Robust & Reliable wireless link
- Easy battery management
- Simultaneous interpretation
- Voting
- Quick set-up and tear-down

The most complete solution for Wireless Conferencing

Access Point

The Confidea Access Point is the central point of communication for the wireless system. It can either be used stand alone for smaller basic discussion systems, as well as connected to a Confidea CU or CPU5500 central unit for larger installations with voting and simultaneous interpretation.

Thanks to the on-board Web server and integrated LAN port all RF-settings and basic conference settings can be controlled from a simple internet browser.

The audio in- and out connections allow easy connection of a microphone, recorder or video conference system.



Battery Pack



The battery pack uses Li-ion cells that guarantee a long life without the inherent degradation of battery capacity known from other rechargeable battery technologies.

The microprocessor controlled charging allows recharging without the need to discharge first.

Via a regular web browser, the battery condition of each unit in operation can be monitored during the meeting, avoiding any surprises. A push button and LED bar indicator on the battery allows checking its condition without having to plug it into a unit.

19" Charging Tray



The Confidea Charging Tray is an 19" rack mountable tray of 3 U high that can recharge 6 Confidea Battery Packs at once.

The loop-through power connection allows easy combining of charging tray to create larger charging stations.

Confidea® Transport Case

The Confidea Transport Case accommodates 12 Confidea units with battery pack, 12 microphones, 1 access point and offers the possibility to build-in 2 charging trays (Confidea CHT, to be ordered separately).

The case has been designed for frequent use and safe transportation. It has several handles and a high quality trolley, making it easy and comfortable to move from one place to another.





The Confidea® Wired System offers:

- Seamless integration with Confidea® Wireless
- Easy CAT5 daisy-chain wiring
- Connections hidden in the base

Wired Confidea: conferencing with an eye for the future



Seamless integration

Confidea Wired seamlessly integrates with its wireless twin: the functionality and controls are identical, so for a user it makes no difference whether he or she is working from a wired or from a wireless station.

When uncertain about future requirements in terms of number of delegates, it is good to know that both seamlessly combine into a hybrid system. Adding additional units to a wired install, temporarily or permanently, can easily be done with wireless units and a WCAP+ access point. This is a concept that offers maximum flexibility and allows for effortless future expansion.

Aesthetics

Cable connections are hidden in the base of the unit. This is an benefit from an aesthetic point of view: the connectors are not visible and, when installed in a permanent set-up, it is possible to hide the cables completely by running them through the table, under the unit.

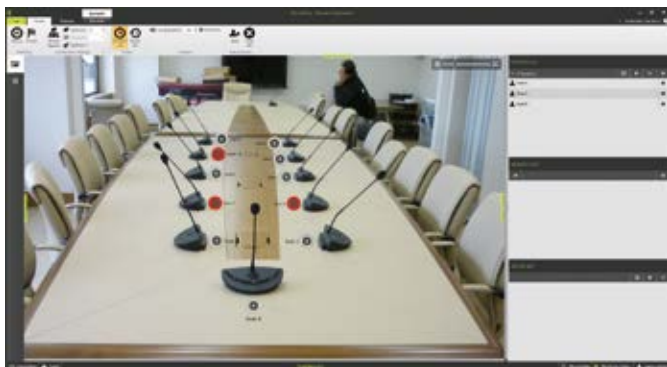


CoCon Conference Control Software Suite

CoCon is a Conference Control Software Suite that offers all required functionality to configure a Confidea installation, prepare a meeting, manage it and display information on the screens in the room.

It is compatible with Confidea Wired, Wireless or mixed (hybrid) installs.

Its architecture is client - server based and hence multi-user.



Room Server



Room Configurator



Meeting Manager



Operator Application



Signage Application

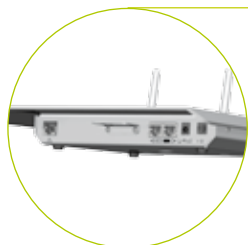
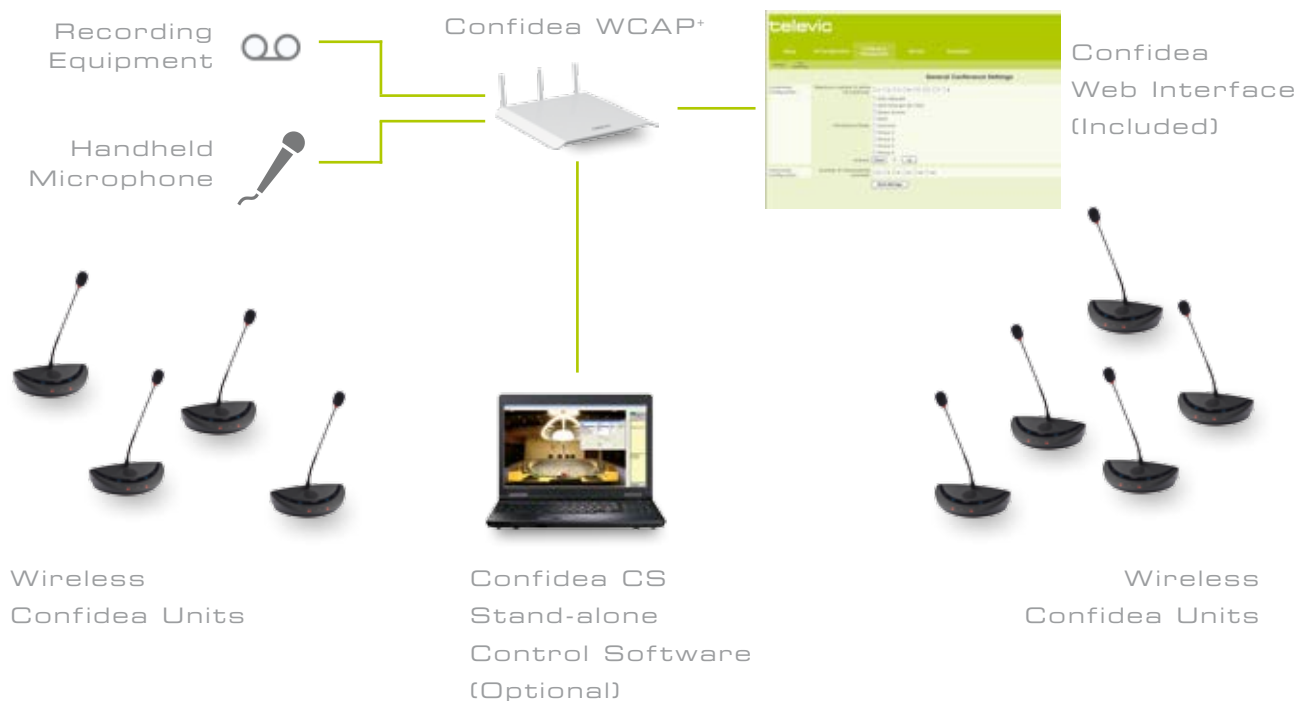


Voting Manager



T-Cast Connector

Wireless Confidea® Stand-alone Set-up



Simple stand-alone wireless operation

For a simple discussion application, the Televic Confidea® Wireless can operate as a stand-alone system, using the Access Point as central unit. The built-in web server allows to configure the system using a standard web browser.

When a greater level of control is needed, the Confidea CS control software for stand-alone set-ups is ideal.



Basic and Extensive voting

Confidea offers both simple 3 button voting functionality in stand-alone configuration, as well as extensive 5-button voting functionality in a full set-up with central unit and PC-connection.

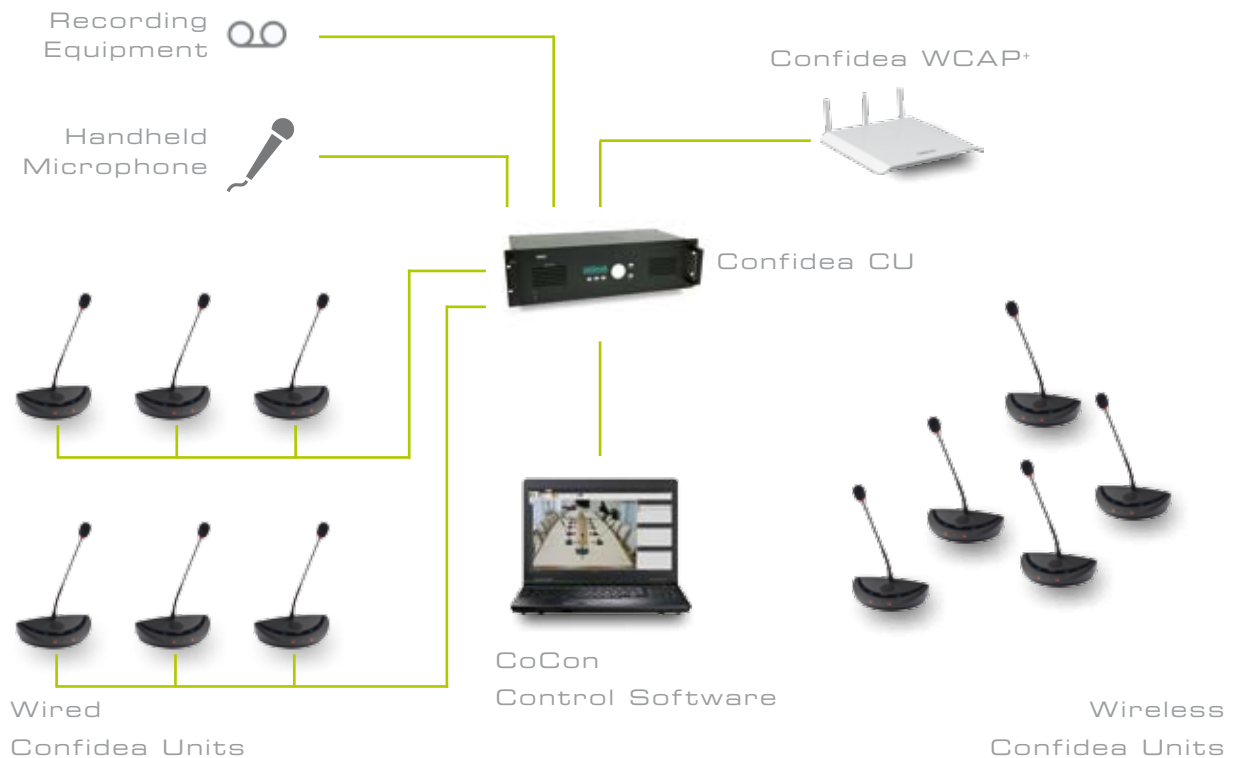
The latter offers voting agenda management, voting result export, etc. In a basic set-up, voting results are displayed on the unit's OLED display.



Simultaneous Interpretation

Televic's Confidea® is the most versatile system around. In addition to the basic discussion functionality, it offers simultaneous interpretation functionality in both wired and wireless versions. The latter with up to 40 language channels - all conveniently transmitted over the wireless link - or up to 58 channels in case of a wired system.

Wired and Wireless Confidea® Hybrid Set-up



Security and reliability

The information exchanged over the wireless link is secured by a triple mechanism. The Televic proprietary protocol makes it impossible to tap into the wireless link with standard equipment. Secondly, the use of access lists prevent the connection of rogue units. Finally, a 128 bit encryption mechanism eliminates the risk of eavesdropping. Moreover, the user can define up to 15 custom encryption keys to even further secure confidentiality of the meeting. Confidea® is hence an ideal product for those meetings where absolute confidentiality is a must.

Link Quality	Battery Status
60%	10.1h
65%	9h
80%	1.7h
15%	0.2h
76%	9.1h
50%	12.2h

Autonomy and battery monitoring

The Televic Confidea® Wireless has been designed for optimised power consumption. Equipped with a high capacity Li-Ion battery, Confidea® offers an autonomy of at least 20 hours. In operation, the battery health of each delegate unit can be monitored via the web server integrated in the access point. The condition of spare batteries can be checked on the battery, eliminating the need to plug it into a unit to verify its status.



OLED information display

The OLED information display with auto dimming function shows the selected language channel and headphone volume. For ease of use, the ISO language code can be added to the channel number, so that the user instantly knows what language he has selected.

televic

conference

www.televic-conference.com



Televic Conference NV (Main office)
Leo Bekaertlaan 1
B-8870 IZEGEM
BELGIUM
T. +32 (0)51 303045
F. +32 (0)51 310670
conference@televic.com