



BROADCAST AUDIO FOR ASSISTIVE LISTENING

AURIAUDIO.COM





WHAT IS AURACAST™ BROADCAST AUDIO?

Auracast™ Broadcast Audio is a new standard for Bluetooth® Low Energy Audio (BLE). It can broadcast low-latency audio simultaneously to an unlimited number of compatible devices, including receivers, cochlear implants, hearing aids, earbuds, and smartphones.

Auracast™ broadcast audio will transform assistive listening and consumer audio experiences.

As next-generation hearing aids, hearables, and consumer devices featuring this Bluetooth® Low Energy audio technology come to market and more venues offer Auracast™ broadcast audio streams, access to high-quality broadcast audio will increase exponentially for anyone who wants to experience clear audio in public spaces.

ENGAGED EXPERIENCES WITH AURI™

Auri is the first complete assistive listening system for professional installation utilizing Auracast™ broadcast audio. Auri is an ideal public solution, addressing hearing assistance and personal listening preferences. Auri enables end users to use their Auracast™ compatible device or a venue-provided receiver to enhance their audio experience.



Network Management



Multi-channel Broadcast



Multi-language



Easy to Use



Open or Secure Audio



Globally Compliant

AURI™ IS IDEAL FOR MULTIPLE ENVIRONMENTS

Classrooms • Lecture Halls • Boardrooms • Houses of Worship • Performing Arts Centers • And More



HOW AURI™ WORKS

An Auri system consists of an installed transmitter, dedicated receivers, and docking stations. The transmitters accept a variety of audio inputs to suit different venues and applications, which can be assigned in mono or stereo and to one or two broadcasts.



Audio Source

Connect the audio source to an Auri transmitter.



Transmitter

The Auri transmitter broadcasts the audio.



Receiver

Access the audio on an Auri receiver or Auracast™ compatible personal device.

Auri works alongside all other assistive listening technologies and can be easily retrofitted in existing venues or combined with ListenIR, ListenRF, ListenWIFI, or Ampetronic hearing loops in new installations. Providing more than one technology ensures the greatest accessibility, with more users accessing the system on their devices. It also remains future-proof as more Auracast-compatible devices come to market.

The Auri transmitter has a line output, making it easy to feed the audio into a second assistive listening system.

MEET THE AURI™ SYSTEM

The **Auri™ transmitter** is designed for professional installation. Available with 2 channels, multiple transmitters can be used to provide more channels or increase the coverage area.



Key Features

- 2 radios with flexible routing options.
- Range when using the Auri RX1 100m (328ft).
- Expandable with repeater mode.
- Network management.
- 2 balanced mic/line inputs with phantom power.
- Optional integrated Dante®.
- Powered by USB-C or PoE.

A dedicated **Auri™ receiver** is designed to meet global accessibility requirements.



Key Features

- Supports integrated neck loop lanyards for people with T-coil-equipped hearing aids.
- Scans for all Auri broadcasts or locks to one or more predetermined channels.
- Supports open and encrypted broadcasts.
- All-day battery life.



GUESTS HAVE A CHOICE

Guests can choose between a dedicated Auri™ receiver or their own Auracast™ compatible receiving device, such as hearing aids, headphones, earbuds, or smartphones. Receiving devices scan for available broadcast. Auri™ dedicated receivers can also be programmed to specific channels.



Smartphone



Headphones



Hearing Aid or
Cochlear Implant



Dedicated
Receiver



Earbuds

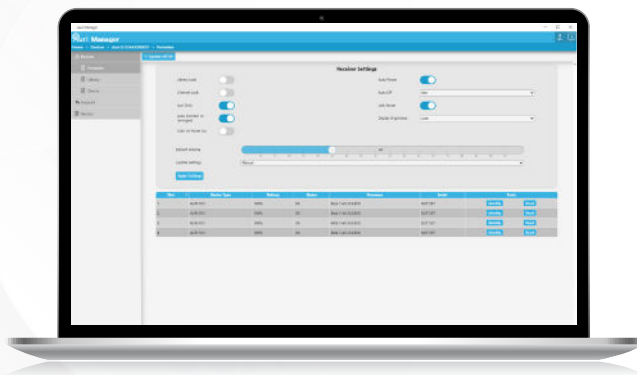
CHARGING & STORING

Docking stations are available in 4 or 16 unit models and can be used for standalone charging or to manage and configure receiver settings. A full receiver configuration can be stored in the docking station and transferred to all docked receivers with a single button press. Docking stations also support automatically updating docked receivers, ensuring your entire system stays on the latest version.



AURI™ MANAGER

The new Auri Manager software for Windows® makes setting up the Auri system simple. Easily configure a single device or manage a large system deployed across multiple locations. Auri Manager supports automatic discovery, full control, and software updates for network-attached transmitters, charging docks, and docked receivers.



The software enables venues to:

- 1 Manage channel names and settings.
- 2 Configure large systems with grouped transmitters.
- 3 Password-protect audio channels.
- 4 Download and install firmware updates.

Auri™ SYSTEM COMPONENTS

1 TRANSMITTER

Consider how many channels you need; multiple transmitters can be used to accommodate more audio channels or larger coverage areas.



Auri TX2N

2 ADD RECEIVERS

Give your guests a choice by providing receivers.



Auri RX1



3 CHOOSE YOUR CHARGING OPTIONS AND ACCESSORIES. DOCKING, CHARGING & STORAGE



Auri D4 Docking Station 4



Auri D16 Docking Station 16

HEADPHONES, NECK LOOPS, & LANYARDS



LA-404 Universal Single Ear Bud



LA-401 Universal Ear Speaker



LA-402 Universal Stereo Headphones



LA-438 Advanced Neck Loop (Adult)

LA-439 Advanced Neck Loop (Child)



LA-470 Auri Ear Phone/Neck Loop Lanyard



LA-304 Hearing Assistance Signage

Do you need to meet assistive listening compliance?

Be sure to add the correct number of receivers, headphones, neck loops (based on the capacity of your space), and hearing assistance signage for every entrance.



Phone: Americas +1-801-233-8992 Toll-free: +1-800-330-0891
United Kingdom +44 (0) 1636 610062 auriaudio.com