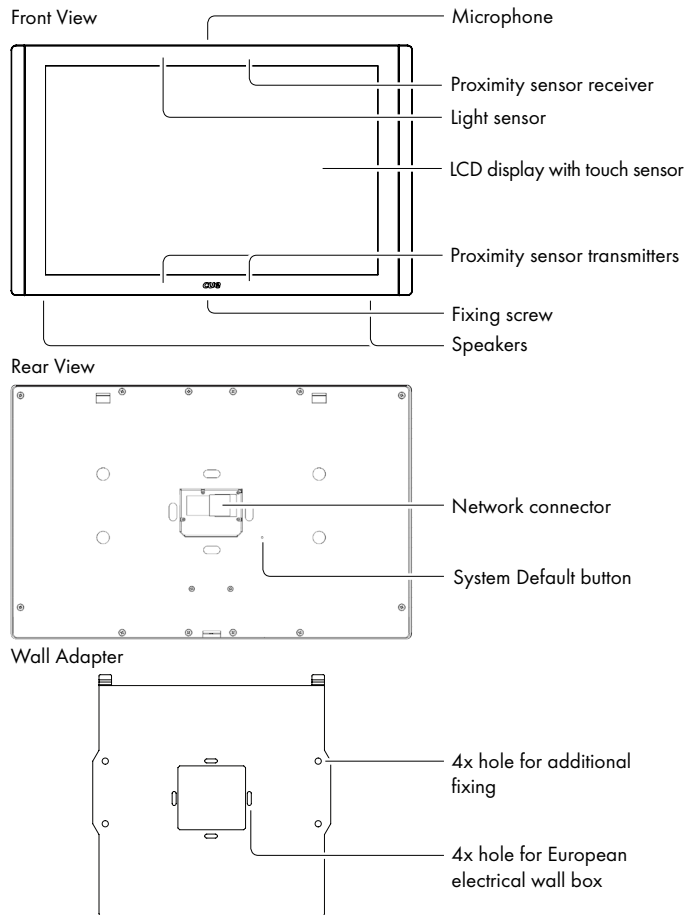


touchCUE-12-B

CS0467



Description



Box Contents

Touch panel touchCUE-12-B incl. wall adapter and screws
Power supply with PoE+ injector incl. power cable
Ethernet cable
Cleaning tissue
Data Sheet
Cue System Connector Wiring Sheet
Declaration of Conformity
Warranty Conditions

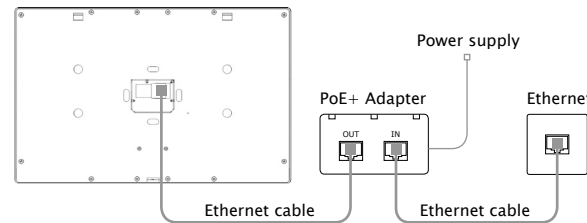
Connection



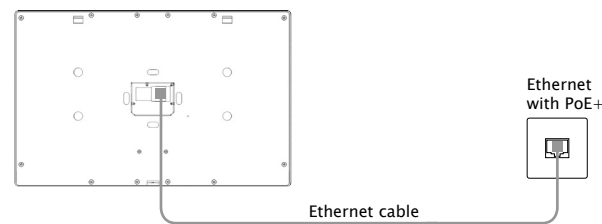
Important Note

This touch panel requires Power over Ethernet Plus (PoE+), IEEE 802.3at compatible power supply.

Ethernet without PoE+ Infrastructure



Ethernet with PoE+ Infrastructure



System Default Setup

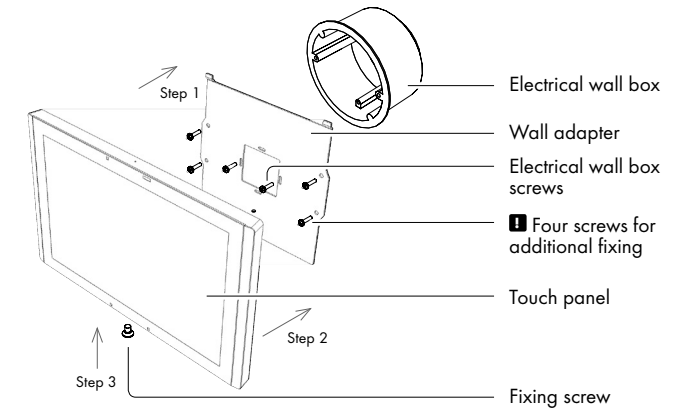
When System Default button is pressed, the system default function is performed and setup is as follows

- IP address: from DHCP
- IP Mask: from DHCP
- Password: Empty (no input required)
- Alternate IP address (network without DHCP server): 192.168.1.128
- Alternate IP mask: 255.255.255.0

User Manual

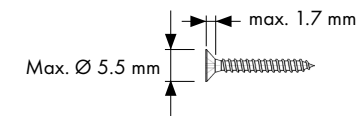
Complete user manual can be downloaded here:
http://www.cuesystem.com/user_manuals.aspx

Installation

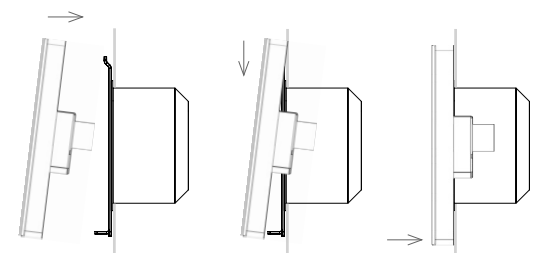


Installation steps are as follows

1. Install wall adapter on the electrical wall box and provide additional fixing by four delivered screws and fasteners.
 - Additional fixing is strictly recommended for this type of panel.
 - Use delivered screws or keep maximum screw dimensions as described below.



2. Connect network cable and put the touch panel on the wall adapter.



3. Carefully tighten the fixing screw to fix touch panel on the wall.