

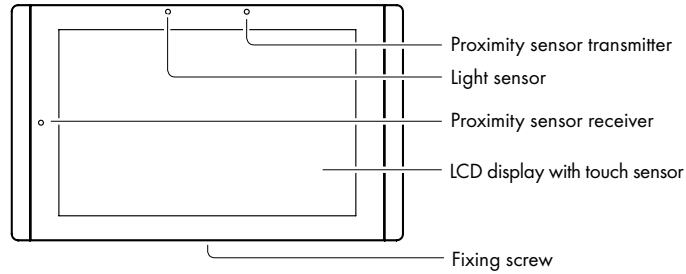
touchONE-7-M

CS0528

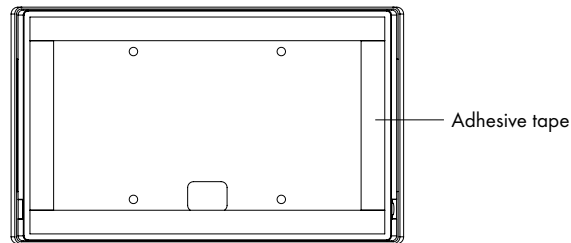


Description

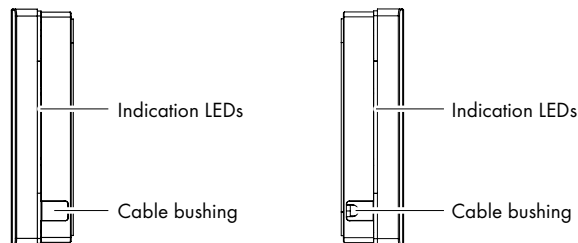
Front View



Rear View

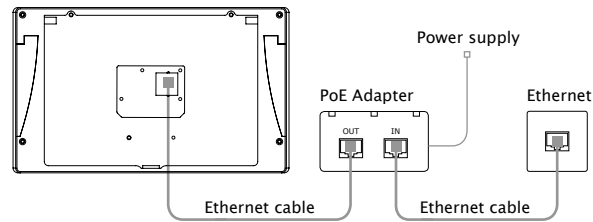


Side View

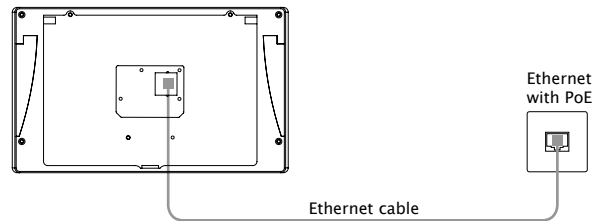


Connection

Ethernet without PoE Infrastructure



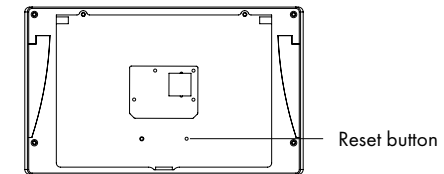
Ethernet with PoE Infrastructure



Factory Default Setup

When the Reset button is pressed longer than 5 sec., the factory default function is performed and setup is as follows:

- IP address: from DHCP
- IP Mask: from DHCP
- Password: Empty (no input required)
- All settings and logo are deleted



Box Contents

Touch panel touchONE-7-M incl. back cover
Power supply with PoE injector incl. power cable
Ethernet cable
Set of cable bushings
Cover foil
Squeegee
Cleaning tissue
Data Sheet
Declaration of Conformity
Warranty Conditions

User Manual And Installation Guides

Complete user manual and installation guides can be downloaded from
<http://www.touchone.eu>.

Multisurface models installation - using adhesive foil

Step 1



Degrease wall (typically glass) surface with alcohol and left it completely dry.

Step 2



Sign top of foil in height 1 560 mm from the floor. It is for recommended height 1 500 mm from floor to center of the panel.

Step 3



Partly remove protective film from adhesive foil and cut it.

Step 4



Use vertical ruler or level to adjust correct foil vertical position. Put foil on the wall with the protective film (not with adhesive part) to the ruler or level.

Step 5



Stick the adhesive part of foil using delivered squeegee.

Step 6



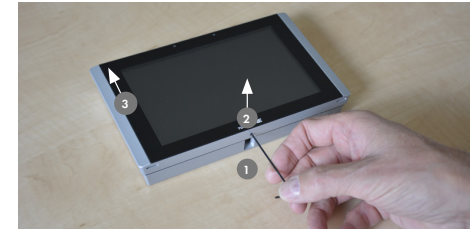
Partially remove the protective film and stick the rest of the foil using a squeegee.

Step 7



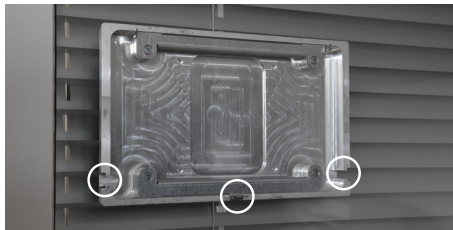
Squeegee lengthwise from the center outwards with overlapping strokes.

Step 8



Loosen the fixing screw using delivered Allen key - ① and remove back cover of the panel - ②, ③.

Step 9



Position of back cover must be oriented as displayed above - cable bushings are left, right and below side oriented.

Step 10



Degrease foil installed on the wall and left it completely dry. Remove protective film from the adhesive tape (installed on the rear side of the back cover) and carefully attach it on the foil installed on the wall.

Step 11



Install cable to the selected bushing and install appropriate cable cover. Cable length inside is 25 cm. Covers for flat and round cables as well as for unused bushings are delivered. Covers are fixed with adhesive tape.

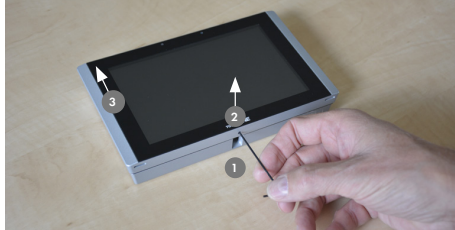
Step 12



Connect Ethernet cable to the panel and put the panel on the back cover - ①, ②. Carefully tighten the fixing screw to fix panel on the back cover - ③.

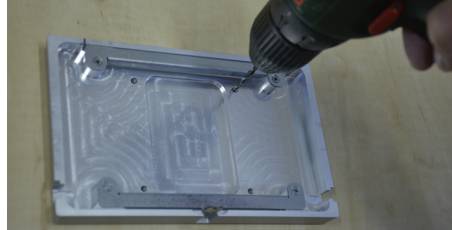
Multisurface models installation - using screws

Step 1



Loosen the fixing screw using delivered Allen key - ① and remove back cover of the panel - ②, ③.

Step 2

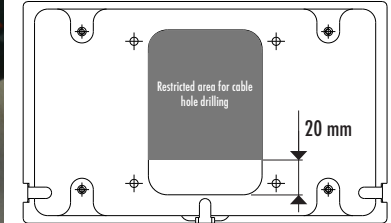


Drill four holes for screws. Use indicated pre-drilled positions.

Step 3



Drill the hole for cable. Hole diameter is 6 mm for cable without connector, 15 mm for cable with connector. Restricted area for drilling the hole is described on the drawing.

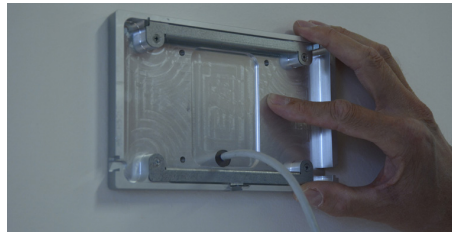


Step 4



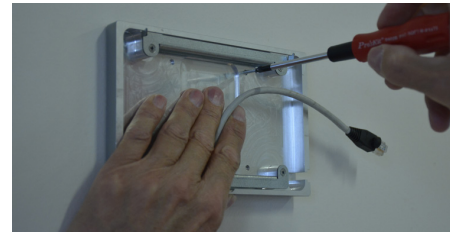
Install cable to appropriate position on the wall regarding restricted area described in previous step. Recommended cable length from the wall is 25 cm. Recommended height from floor to center of the panel is 1 500 mm.

Step 5



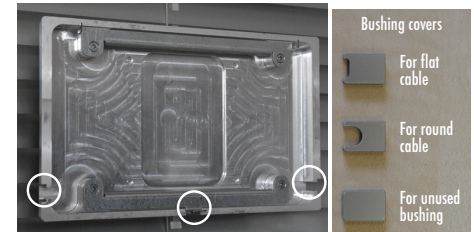
Install cable to the cable hole and put back cover on the wall. Position of back cover must be oriented as displayed above - cable bushings are left, right and below side oriented.

Step 6



Fix back cover on the wall using appropriate screws depending on the wall material.

Step 7



Install covers for unused bushings as described above. Covers are fixed with adhesive tape.

Step 8



Connect Ethernet cable to the panel and put the panel on the back cover - ①, ②. Carefully tighten the fixing screw to fix panel on the back.